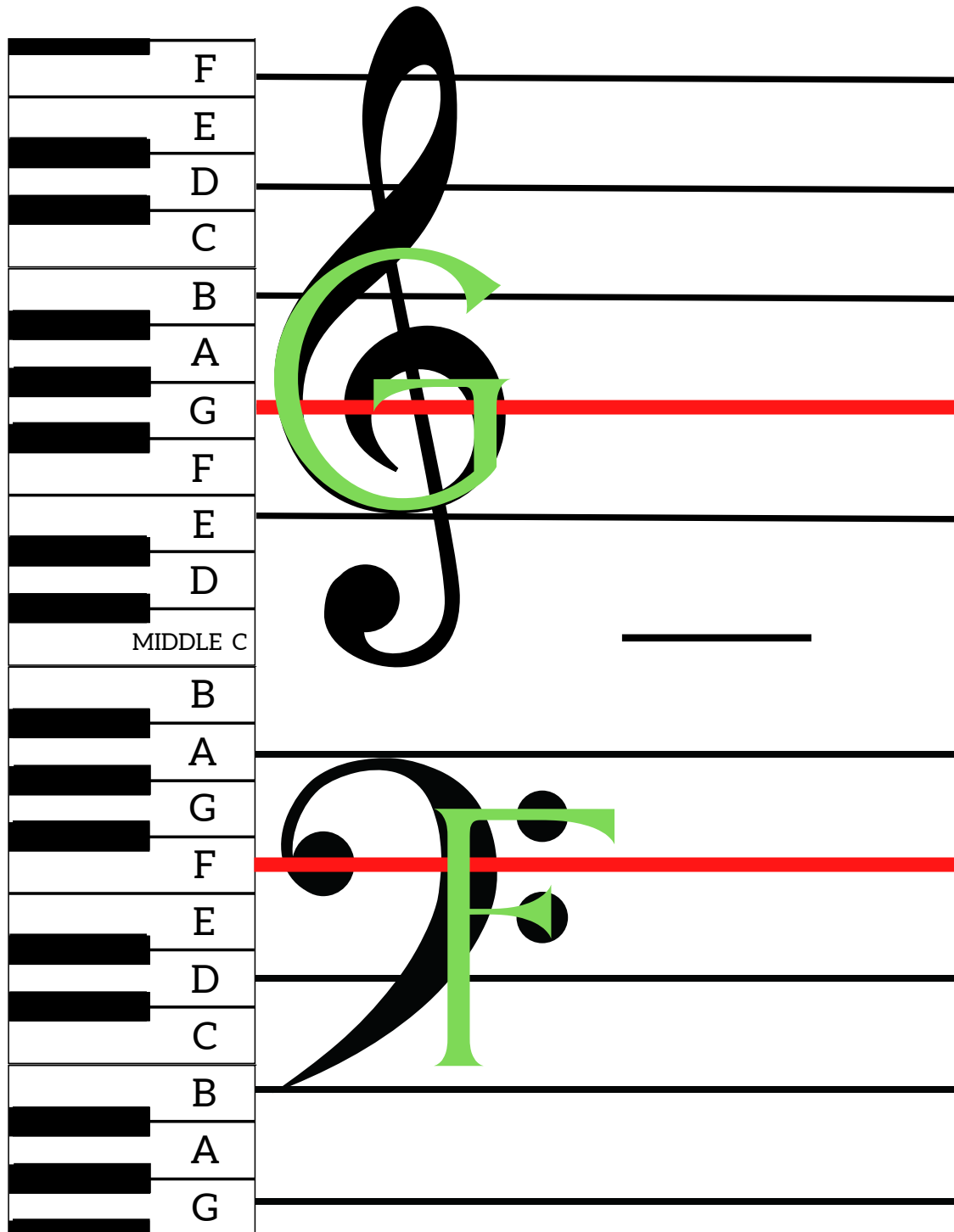


Anchor Notes

The treble clef is based on an old fashion letter G.
The line that goes through the curl of the G is the G above middle C.

The bass clef is originally an old fashion letter F.
The line that goes between the two dots is the F below middle C.



A musical staff consisting of five horizontal lines. On the left side, a piano keyboard is represented by black and white keys. The notes are labeled with letters: F, E, D, C, B, A, G, F, E, D, MIDDLE C, B, A, G, F, E, D, C, B, A, G. A large treble clef is positioned on the upper staff, and a large bass clef is on the lower staff. A horizontal line is drawn on the second line of the upper staff, and two dots are placed on the first and second lines of the lower staff.